

Making and decorating a Bronze Age beaker

Bronze Age pottery fact file

- At the start of the Bronze Age, people started making new types of pottery. One of the best known types are called 'beakers'.
- Beakers are decorated with complicated patterns made from lines, zig-zags and dots. In the Bronze Age, these would have probably been carved into the wet clay with tools made of wood, bone or antler.
- Beakers were placed in Early Bronze Age burials, which suggest they were an important object in peoples' lives. Some archaeologists think they were used to eat and drink in special events, such as feasts.

Your task

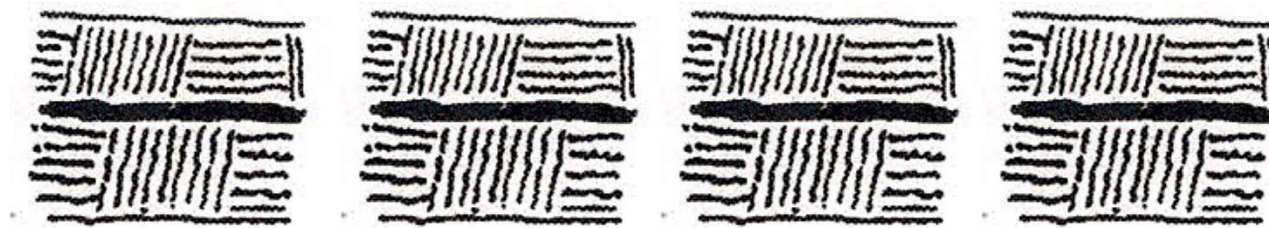
Option 1: If you are feeling really adventurous, you can make your own beakers out of clay. Watch this (<https://www.youtube.com/watch?v=bELgM8aSqLc>) tutorial on YouTube to learn how to make 'pinch pots'.

Option 2: If you do not have any clay, draw an outline of a beaker, using the photo of examples below to help you with the shape and size.

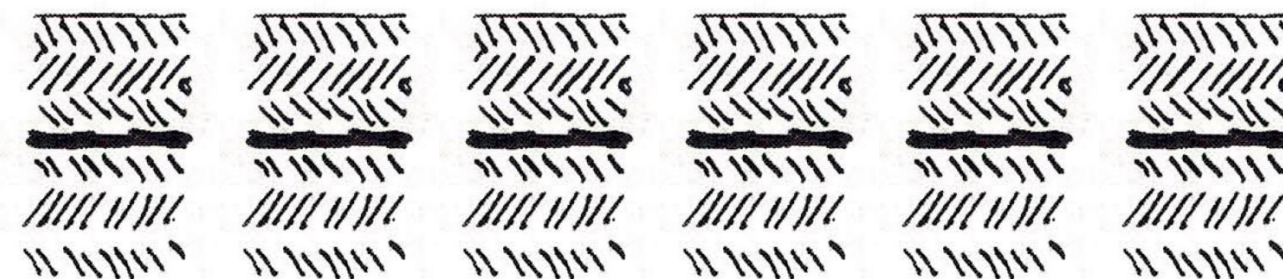


Now you can decorate your beaker! An early archaeologist called John Abercromby was very interested in the different patterns Bronze Age people used to decorate their beakers. He wrote a book in 1912 with pictures of all the different pot types and also the patterns. Some of his drawings are on the next page to give you some ideas about how to decorate your own Bronze Age pot.

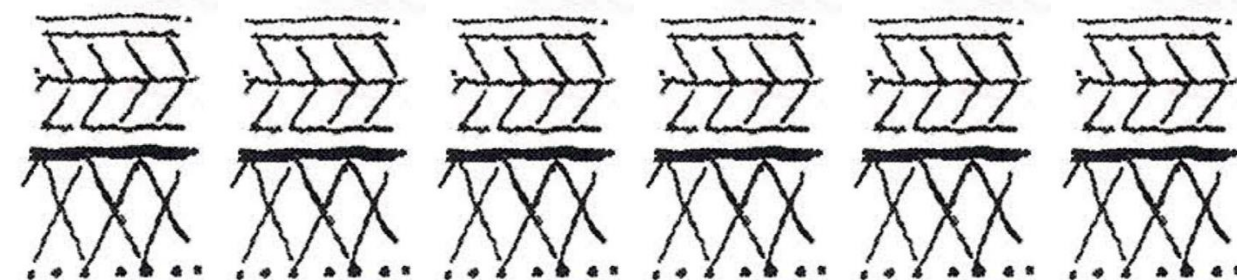
Pattern number one



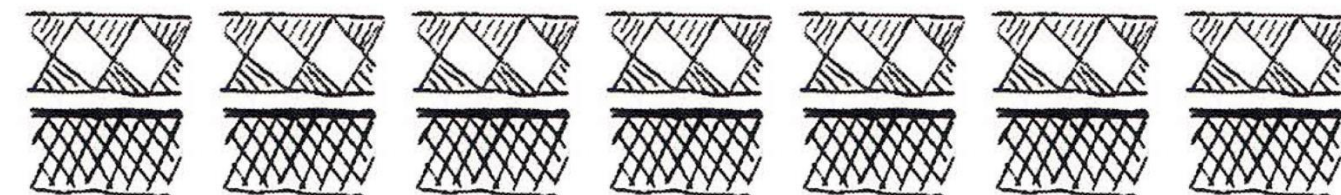
Pattern number two



Pattern number three



Pattern number four



Thanks to the experimental potter Juan Ignacio Jiménez Rivero for his advice and photographs. Illustrations are based upon John Abercromby's 1912 book on Bronze Age pottery in Britain.